

H&S

HD 7+4 CONVEYOR

Self-Unloading Forage Box

FRONT UNLOAD ONLY!



! WARNING

READ AND UNDERSTAND THIS MANUAL BEFORE OPERATING THIS EQUIPMENT.

UNSAFE OPERATION OR MAINTENANCE OF THIS EQUIPMENT CAN RESULT IN SERIOUS INJURY OR DEATH.

OPERATOR'S MANUAL and PARTS LIST

3-4-2005

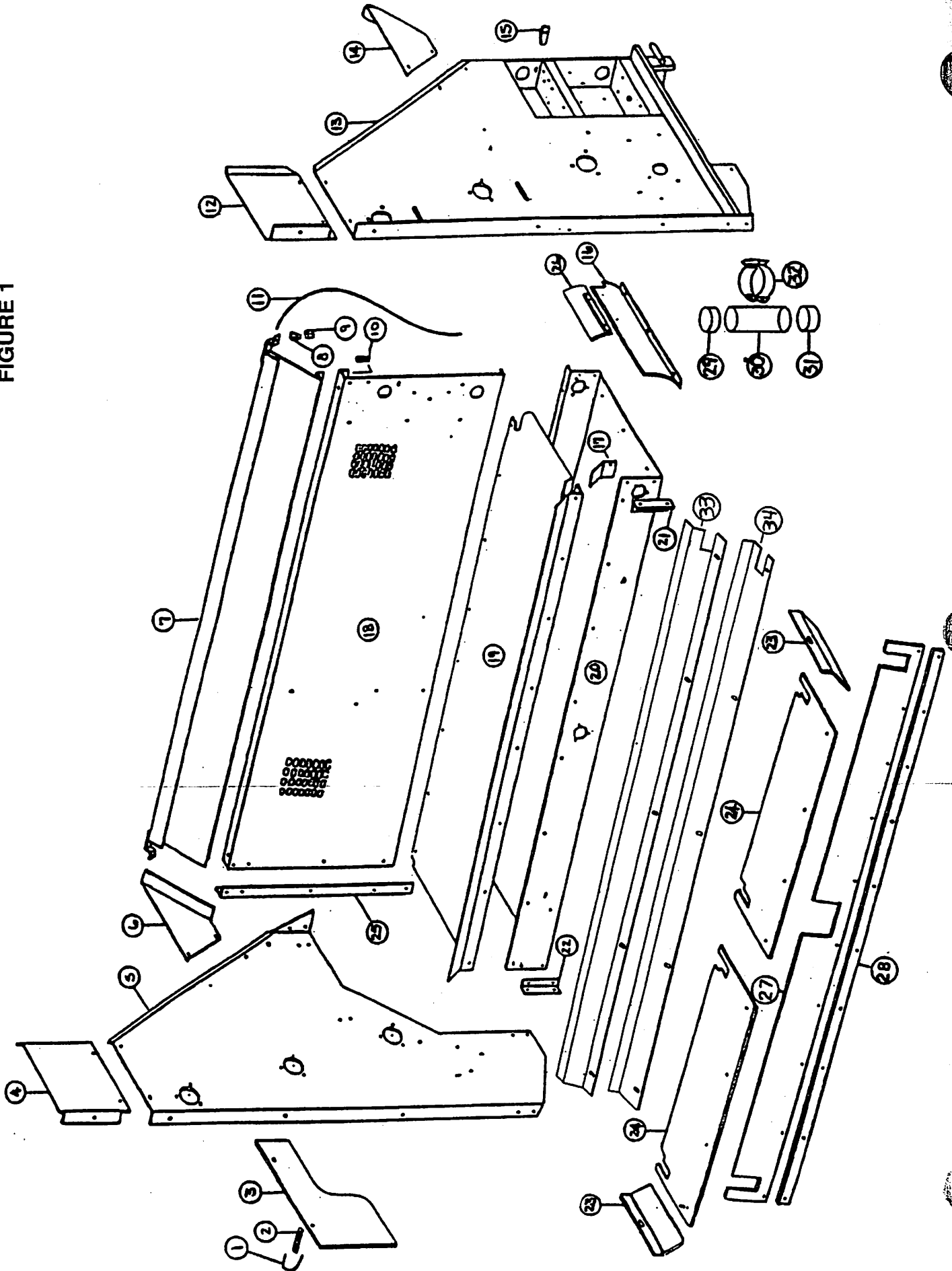
Manufactured By

H&S MANUFACTURING CO., INC.

P.O. BOX 768 • (715) 387-3414 FAX (715) 384-5463

MARSHFIELD, WISCONSIN 54449

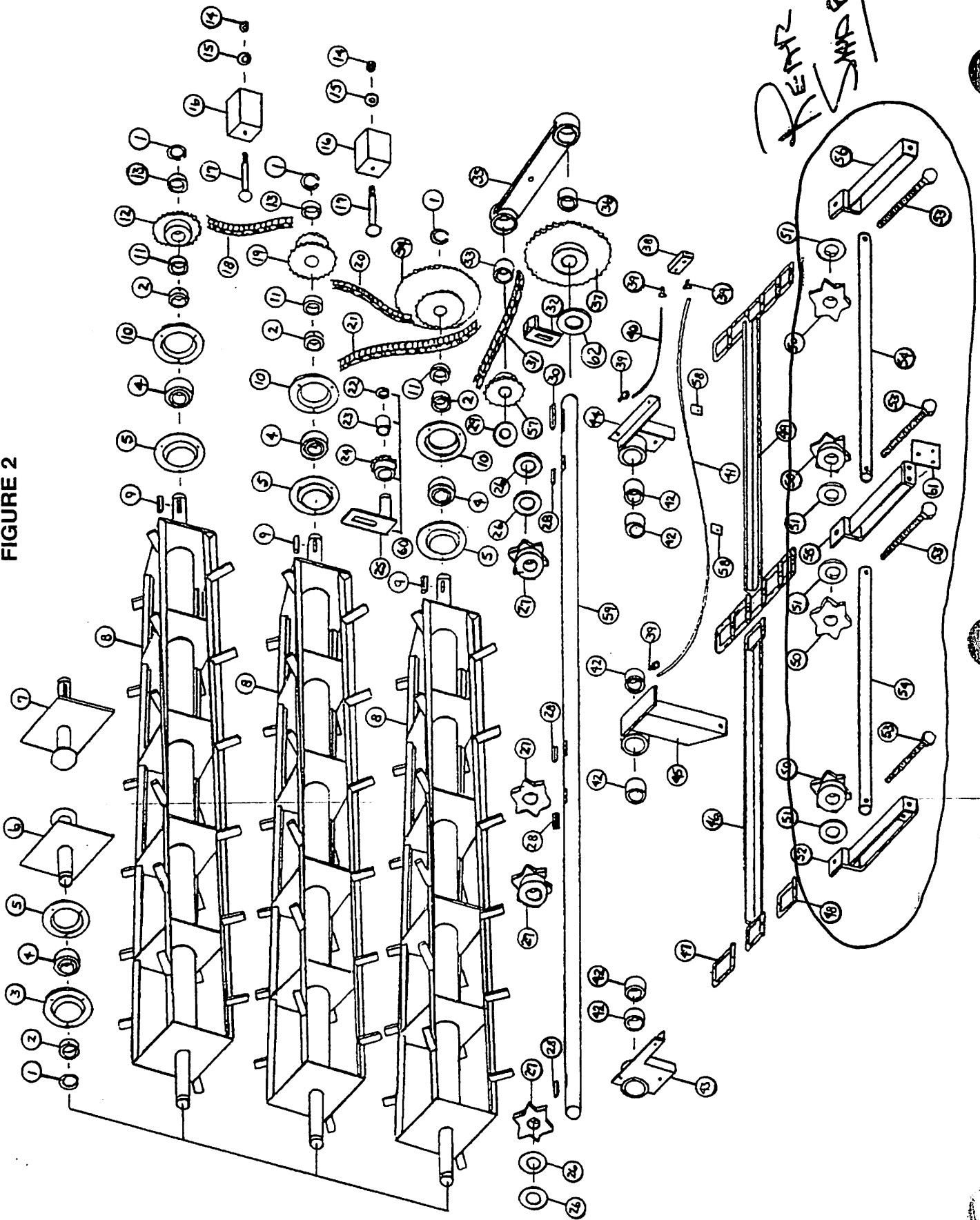
FIGURE 1



**FIGURE 1
HOUSING COMPONENTS FOR UNITS**

ITEM	PART NO.	DESCRIPTION
1.	F32	U-Bolt (2)
2.	S1	Spring for Shield (2)
3.	S2	Plastic Beater Guard
4.	S3	LH Side Panel Top
5.	S4	LH Side Panel
6.	S5	LH Emergency Stop Panel
7.	S370	Emergency Stop Panel
8.	ES14	Thimble (2)
9.	ES15	Cable Clamp (2)
10.	S7	Spring for Emergency Stop (3)
11.	S8	Emergency Stop Cable
12.	S9	RH Side Panel Top
13.	S10	RH Side Panel
14.	S11	RH Emergency Stop Panel
15.	S12	Gear Box Brace
16.	S13	Return Pan End
17.	S14	Cross Apron Pan End
18.	S353	Front Main Panel
19.	S16	Cross Apron Pan
20.	S356	Return Pan
21.	S18	RH Return Pan Angle
22.	S19	LH Return Pan Angle
23.	S20	Apron Side Spacer
24.	PB74	Drive Shaft Panel
25.	S22	LH Front Angle
26.	S217	Return Pan End
27.	S306	Rubber Seal
28.	S288	Rubber Seal Strap
29.	S414	Cap
30.	S415	Manual Holder Tube
31.	S418	Cap w/Hole
32.	S416	Manual Holder Clamp
33.	S239	Cross Conv. Front Hold Down
34.	S240	Cross Conv. Rear Hold Down

FIGURE 2



**FIGURE 2
BEATERS AND MAIN APRON DRIVE**

ITEM	PART NO.	DESCRIPTION	ITEM	PART NO.	DESCRIPTION
1.	F73	Snap Ring	37.	S45	Apron Drive Sprocket 30T
2.	F16	Lock Collar	38.	S46	Grease Line Bracket
3.	F114	Bearing Flange w/Zerk	39.	S47	Grease Line Fitting
4.	F115	Bearing Greaseable Type	40.	S48	Short Grease Line
5.	F14	Bearing Flange	41.	S49	Long Grease Line
6.	S23	LH Beater Stub Shaft	42.	S50	Drive Shaft Bushing
7.	S24	RH Beater Stub Shaft	43.	S51	LH Drive Shaft Bracket
8.	S25	Beater	44.	S52	RH Drive Shaft Bracket
9.	G23	5/16" x 1-3/8" Square Key	45.	S53	Center Bearing Bracket
10.	F114A	Bearing Flange w/Zerk 45 Degree	46.	S54	T-Rod Slat w/Att. Links
11.	S218	3/8" Spacer	47.	S55	T-Rod Standard Link
12.	S26	3rd Beater Sprocket 20T	48.	S56	T-Rod Connector Link
13.	S219	1/4" Spacer		11S51	667H Pintle Connector Link
14.	K60	Nut		11S50	667H Pintle Att. Link RH or LH
15.	X67	Washer	49.	S57	T-Rod Complete Apron 14'
16.	S27	Wood Chain Tightener		S230	667H Pintle Apron 14'
17.	S28	Carriage Bolt		S58	T-Rod Complete Apron 16'
18.	X58	2nd to 3rd Beater Chain 89 Pitches #50		S231	667H Pintle Apron 16'
19.	S30	2nd Beater Sprocket 30T - 13T		S59	T-Rod Complete Apron 18'
20.	S31	1st to 2nd Beater Chain 98 Pitches #50		S232	667H Pintle Apron 18'
21.	X58	Beater Drive Chain 89 Pitches #50		S422	T-Rod Complete Apron 20'
22.	10R32	Snap Ring		S432	667H Pintle Apron 20'
23.	S33	Chain Tightener Bushing	50.	S60	Rear Idler Sprocket
24.	S34	Tightener Sprocket w/Bushing	51.	S61	Idler Shaft Spacer
25.	L10R35	Chain Tightener Bracket	52.	S62	LH Rear Idler Bracket
26.	S36	Drive Shaft Spacer	53.	A7	Tightener Bolt
27.	S37	Apron Drive Shaft Sprocket	54.	S63	Rear Idler Shaft
28.	S436	3/8" x 1-1/2" Square Key	55.	S64	Center Idler Bracket
29.	S327	Poly Gearbox Washer	56.	S65	RH Rear Idler Bracket
30.	S38	3/8" x 2-3/8" Square Key	57.	ST11	Worm Gear Shaft Sprocket 13T
31.	ST10	Apron Drive Chain 56 Pitches #80		S66	Slow Down Sprocket 11T
32.	S40	Chain Tightener	58.	S67	Grease Line Clip
33.	S41	Bushing	59.	S68	Main Apron Drive Shaft
34.	S42	1st Beater Sprocket 60T-20T	60.	S216	Chain Tightener Assembly
35.	S43	Drive Shaft Brace	61.	S371	Cable Bracket
36.	S44	Bushing	62.	S409	Drive Shaft Shim

NOT SHOWN

F157 #80 Connector Link

F158 #80 Offset Link

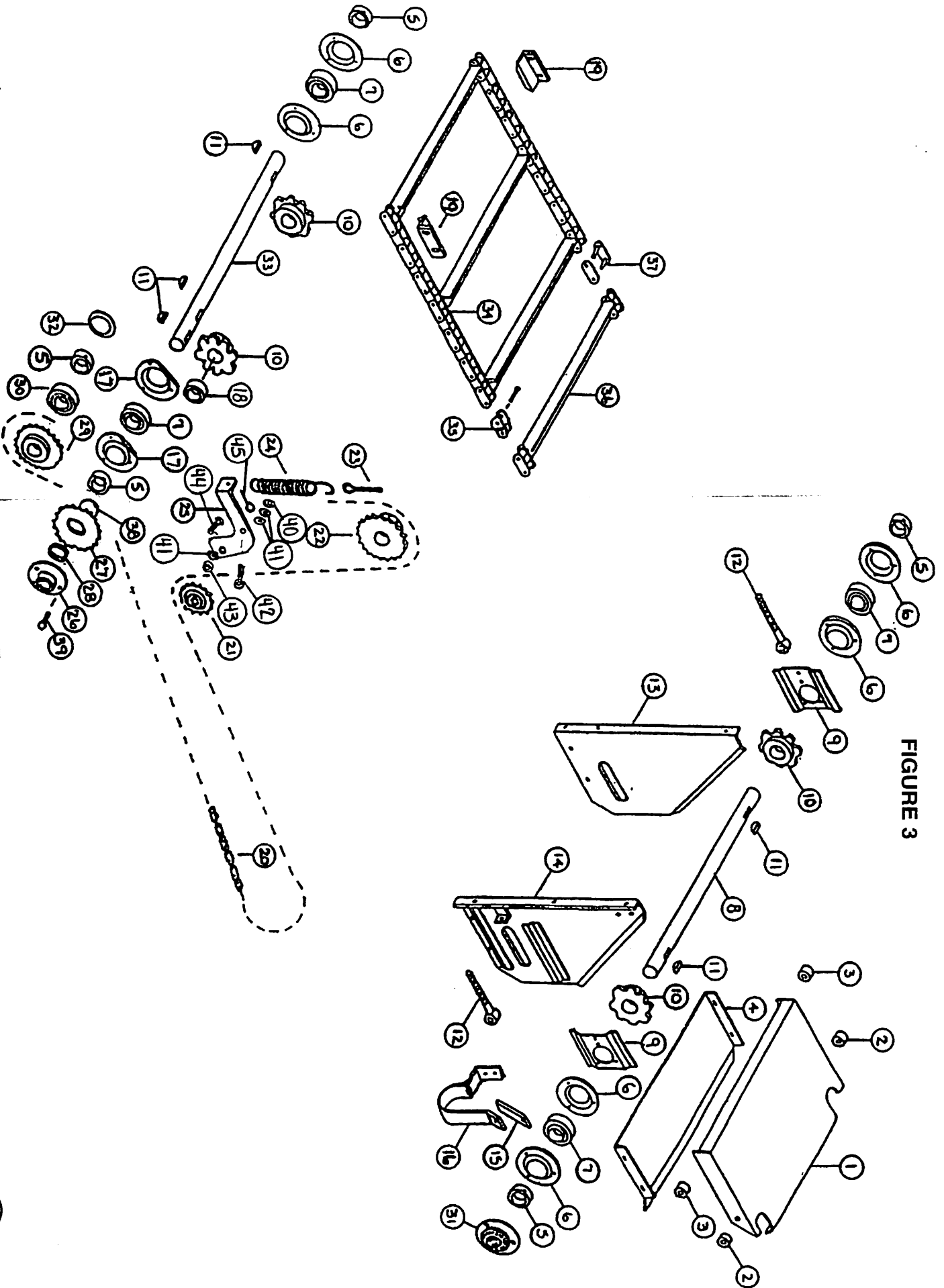


FIGURE 3

**FIGURE 3
CROSS APRON AND DRIVE ASSEMBLY**

ITEM	PART NO.	DESCRIPTION
1.	S69	Cross Apron Pan Extension
2.	S70	Spacer
3.	S71	Pan Extension Carrier
4.	S72	Return Pan Extension
5.	4C9	Lock Collar
6.	4C7	Bearing Flange
7.	4C8	Bearing
8.	S73	Cross Apron Idler Shaft
9.	S74	Tightener Bracket
10.	L10R24	8 Tooth Sprocket
11.	5B10	1/4" x 1" Woodruff Key
12.	S75	Tightener Bolt
13.	S76	Tightener Panel Rear
14.	S77	Tightener Panel Front
15.	S78	PTO Holder Rubber Tab
16.	S354	PTO Holder
17.	X85	Bearing Flange Sheared
18.	K132	3/8" Spacer
19.	S223	Cross Conveyor Hold down
20.	S357	Front Drive Chain 193 Pitch #50
21.	K101	Tightener Sprocket 17T
22.	S82	Sprocket 24T
23.	ES10	5/16" x 3" I-Bolt
24.	ST36	Spring
25.	S459	Tightener Bracket
26.	S391	Shear Hub
27.	S392	Sprocket 24T
28.	S393	Bronze
29.	K89	Idler Sprocket 20T
30.	K90	Bearing
31.	S87	Cross Apron Shaft Guard
32.	K92	Snap Ring
33.	S390	Cross Apron Drive Shaft
34.	S89	Cross Conveyor
35.	K122	550 Offset Link Cross Conveyor
36.	K120	550 Slat w/Attached Links
37.	K121	550 Connector Link Cross Conveyor
38.	S394	Snap Ring
39.	RGB38	Shear Bolt 5/16" x 1" GR.2
*	X60	#50 Offset Link
*	X61	#50 Connector Link
40.	A34	Washer 1/2"
41.	S468	Washer
42.	16SV126	Counter Sunk Bolt 2"
43.	R65	Spacer 3/8"
44.	S467	Count Sunk Bolt 2-1/4"
45.	K79	Eye Bolt

NOTE: * (Means Not Shown)

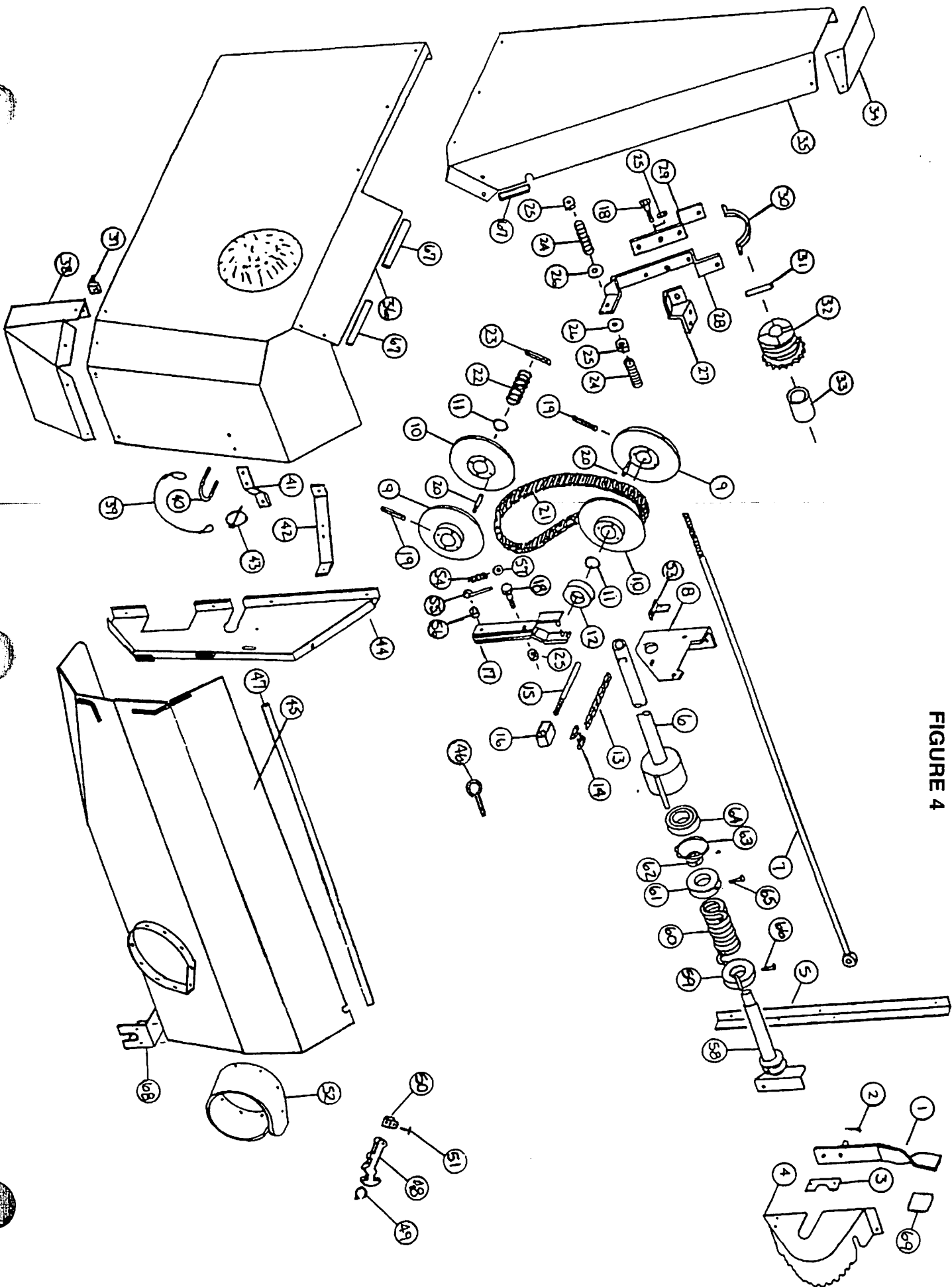


FIGURE 4

FIGURE 4
SHIELDS - BEATER CLUTCH - BELT DRIVE

ITEM	PART NO.	DESCRIPTION	ITEM	PART NO.	DESCRIPTION
1.	S364	Shifter Handle	36.	S120	Main Side Shield
2.	X43	Cotter Pin	37.	D58	Shield Angle
3.	S91	Shifting Pipe Bracket	38.	S121	Side Shield Bottom
4.	S360	Speed Selector Panel	39.	S122	Clip Pin Cable
5.	S365	Front Center Angle	40.	F32	U-Bolt
6.	S366	Shifting Pipe (Apron)	41.	S123	Shield Latch Bracket
7.	S367	Shifting Rod (Beater)	42.	S234	Shield Brace
8.	S96	Shifting Bracket	43.	F56	Clip Pin
9.	S97	Stationary Sheave	44.	S333	Front Upright Shield
10.	S295	Sliding Sheave	45.	S334	Front Shield
11.	S99	O-Ring	46.	BFR319	I-Bolt
12.	S100	Thrust Bearing	47.	S359	Edging 38"
13.	S101	#40 Chain 5 Pitch	48.	X192	Front Shield Latch (Rubber)
14.	S102	#40 Connector Link	49.	X193	Latch Catch Bracket
15.	S103	Linkage Rod	50.	X194	Latch Mounting Bracket
16.	S104	Adjustment Block	51.	X195	Pin
17.	S105	Variable Speed Shifter	52.	S131	PTO Rubber Shield
18.	R10	1/2" x 1-1/4" Bolt GR.5	53.	S221	Spring Shift Bracket
19.	S106	5/16" x 2-3/4" Expansion Pin	54.	S222	Shifting Spring
20.	S296	Sheave Pin	55.	S220	Shifting Spring Rod
21.	S108	Variable Speed Belt	56.	K94	Spacer
22.	S109	Spring	57.	T16	1/4" Flat Washer
23.	S110	1/4" x 2" Expansion Pin	58.	S290	Shifter Handle Pipe End
24.	S111	Spring	59.	S291	Spring Pin Collar
25.	9S17	1/2" Lock Nut	60.	S292	Spring
26.	S285	Beater Clutch Washer	61.	S293	Spring Collar
27.	S112	Beater Clutch Bracket	62.	4C9	Lock Collar
28.	S113	Beater Clutch Long Arm	63.	K92	Snap Ring
29.	S114	Beater Clutch Short Arm	64.	K90	Bearing
30.	ST58	Clutch Yoke	65.	17G141	Bolt 3/8" x 1-1/4" GR.5
31.	S115	Beater Clutch Pin	66.	X111	Bolt 3/8" x 1" GR.5
32.	S116	Beater Clutch Sprocket	67.	S328	Edging 3-1/2"
33.	S117	Beater Clutch Bushing	68.	S346	Mounting Bracket
34.	S118	Beater Shield Top	69.	S403	Handle Grip
35.	S119	Beater Side Shield	*	S368	Complete Shifter

NOTE: * (Means Not Shown)

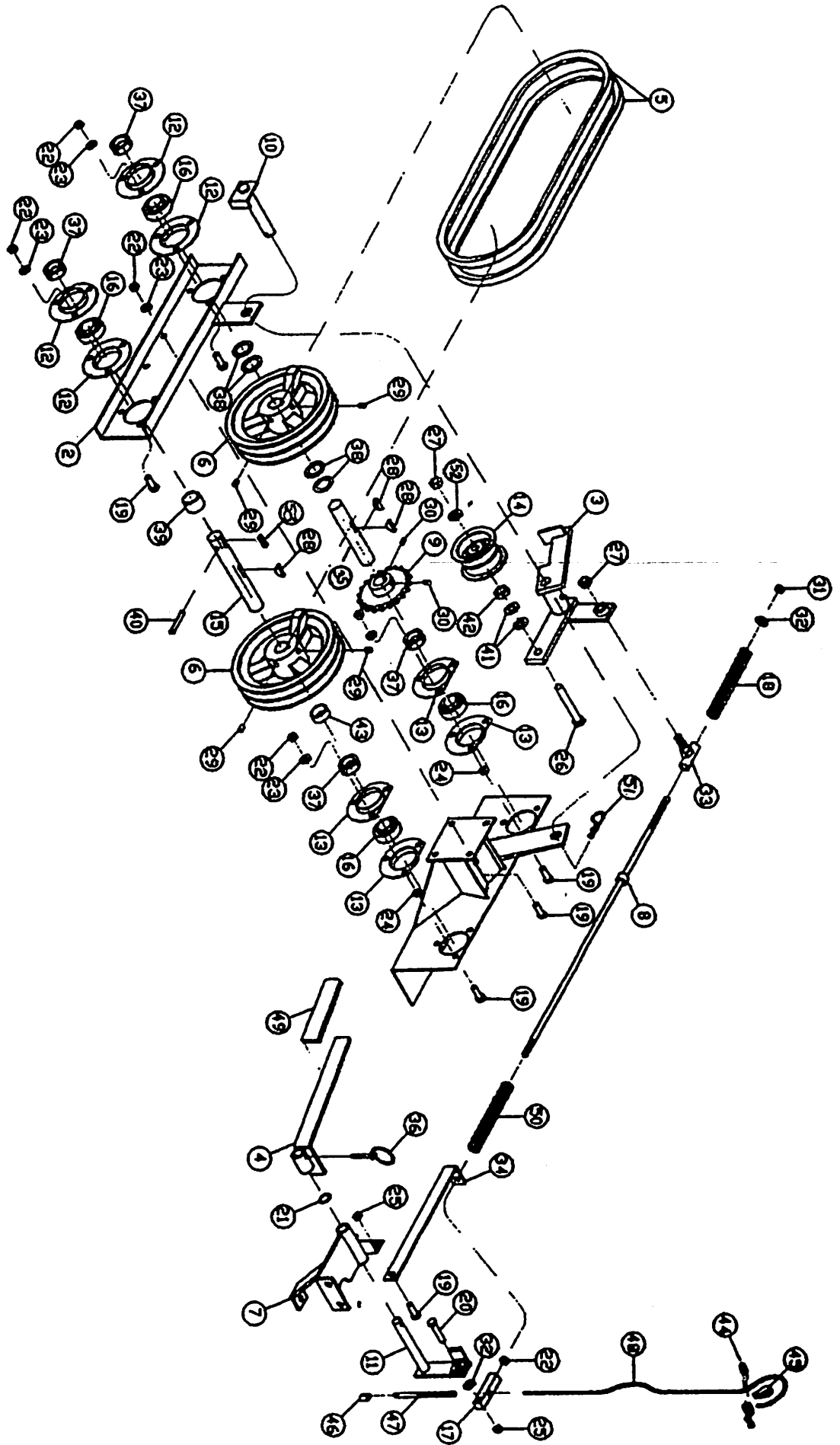


FIGURE 5

**FIGURE 5
CROSS CONVEYOR CLUTCH - BELT DRIVE**

ITEM	PART NO.	DESCRIPTION
2.	S335	Front Clutch Plate
3.	S341	Idler-Stop Assembly
4.	S337	Handle Lever
5.	S332	Drive Belt Set
6.	S342	Pulley
7.	S339	Handle Mount
8.	S343	Shifting Rod
9.	11S19	Sprocket 50B20
10.	S340	Tightener Pivot Shaft
11.	S338	Handle Lever
12.	4C7	Bearing Flange
13.	X85	Bearing Flange Sheared
14.	K156	Idler Pulley
15.	S458	Input Pulley Shaft
16.	4C8	Bearing
17.	S347	Shifter Rod End
18.	23N211	Spring 3/4"
19.	X111	3/8" x 1" Bolt GR.5
20.	BFR320	3/8" x 1-3/4" Bolt GR.2
21.	S352	Internal Star Washer
22.	K60	3/8" Nut
23.	B68	3/8" Lockwasher
24.	S355	3/8" Jam Nut
25.	K25	3/8" Locknut
26.	16SV91	1/2" x 3-1/4" Bolt GR.5
27.	R11	1/2" Top Locknut
28.	5B10	1/4" x 1" Woodruff Key
29.	---	3/8" Setscrew
30.	---	5/16" Setscrew
31.	A14	3/8" Nylock Nut
32.	X67	3/8" Flatwasher
33.	S344	Clutch Rod Slide
34.	S348	Spring Bracket
35.	S349	Drive Pulley Shaft
36.	S438	Clip Pin
37.	4C9	Bearing Lock Collar
38.	S345	Spacer (.074)
39.	K99	Spacer, 7/8"
40.	BFR335	5/16" x 2" Expansion Pin
41.	K68	1/2" Lockwasher
42.	X112	Spacer, 9/16"
43.	K106	Spacer, 1/2"
44.	BFR220	Cable Clamp
45.	ES4	Thimble
46.	ES5	Cable Compression Sleeve
47.	S361	Stop Cable Stiffener
48.	S358	Emergency Stop Cable
49.	S362	Handle Lever Grip
50.	S369	Spring 5/8"
51.	ES7	Hair Pin
52.	R35	1/2" Lock Washer (As Needed)
53.	S135	1/4" x 1-1/4" Square Key

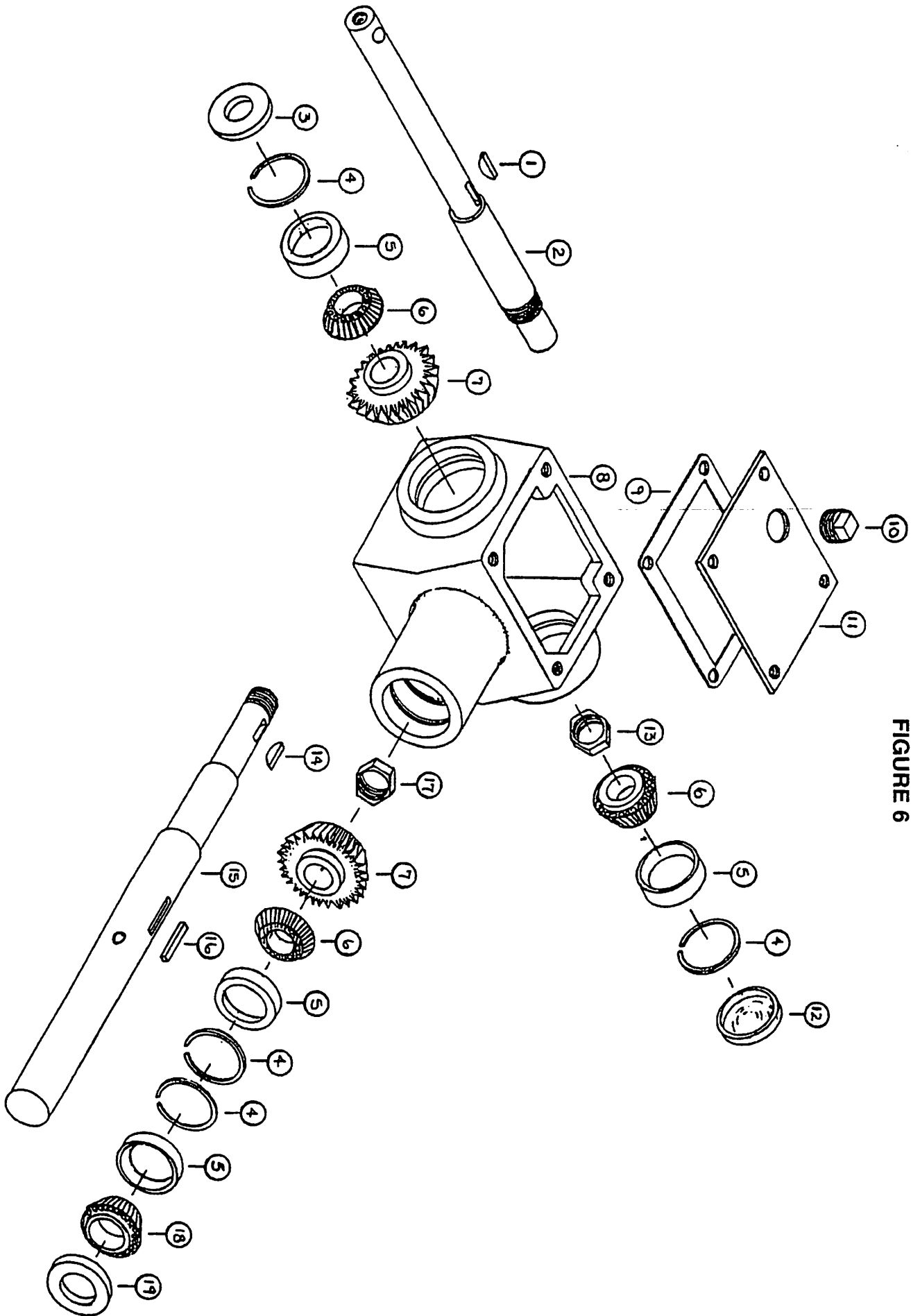


FIGURE 6

**FIGURE 6
BEVEL GEARBOX**

ITEM	PART NO.	DESCRIPTION
1.	5B10	1/4" x 1" Woodruff Key
2.	S132	Gearbox Side Shaft
3.	3G9	Seal
4.	3G19	Snap Ring
5.	3G18	Race #15245
6.	3G7	Bearing #15101
7.	3G5	Gear
8.	3G1	Gearbox Housing
9.	3G2	Gearbox Gasket
10.	3G20	Fill Plug
11.	3G3	Cover
12.	X2	Dust Cap
13.	3G11	Nut
14.	5B10	1/4" x 1" Woodruff Key
15.	S134	Gear Box Front Shaft
16.	S135	1/4" x 1-1/4" Square Key
17.	3G4	Nut
18.	L3G24	Gearbox Bearing #15113
19.	S136	Seal
*	S137	Bevel Gearbox Complete

NOTE: * (Indicates Not Shown Assembled)

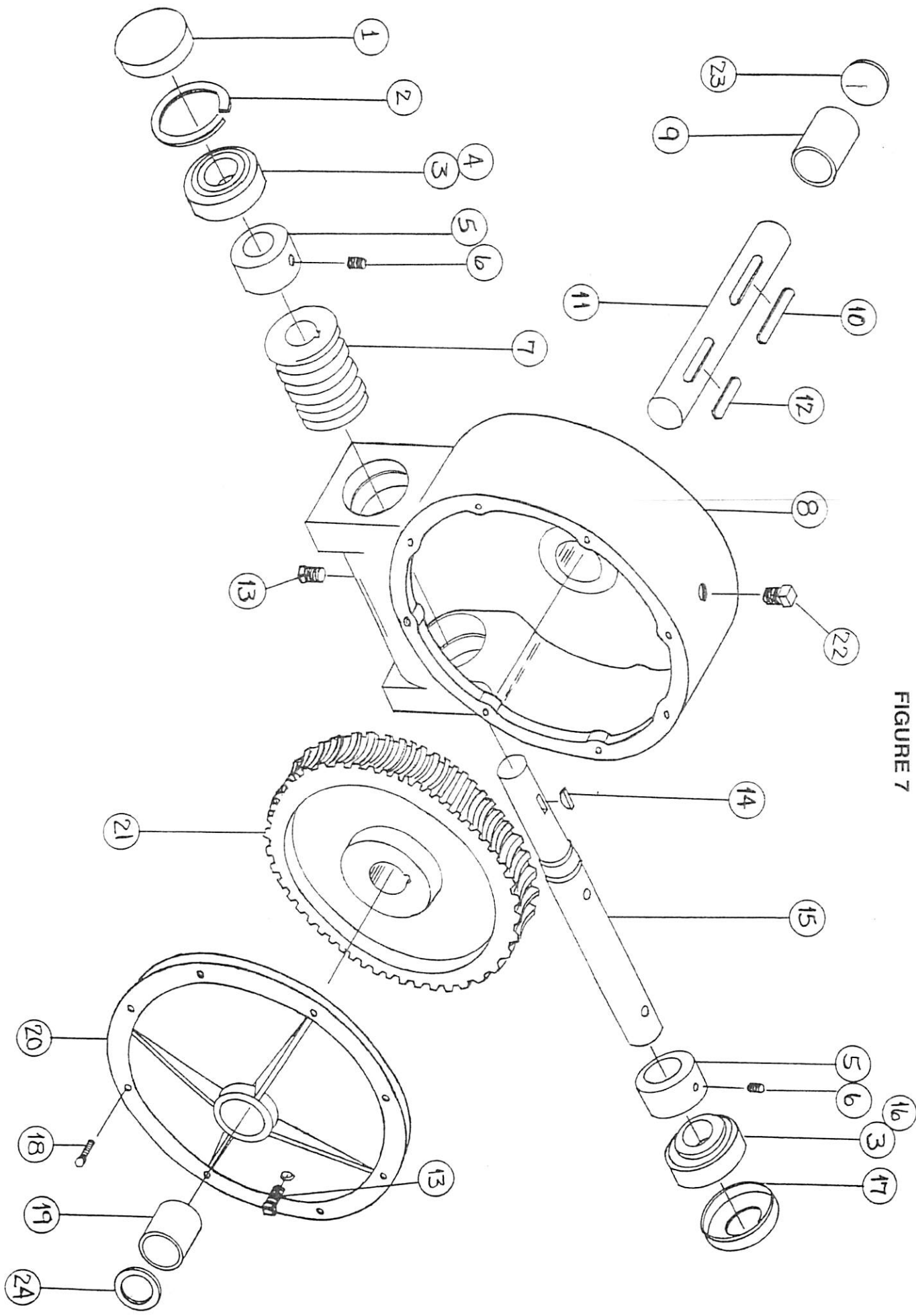


FIGURE 7

FIGURE 7
WORM GEARBOX

ITEM	PART NO.	DESCRIPTION
1.	G90	Dust Cap
2.	3G19	Snap Ring
3.	3G18	Race #15245
4.	3G7	Bearing #15101
5.	X9	Spacer
6.	G83	Set Screw
7.	G76	Worm
8.	G114	Geabox Housing
9.	X8	Gearbox Bushing
10.	S138	3/8 x 2-3/8" Square Key w/Round Ends
11.	S139	Worm Gear Side Shaft
12.	S437	3/8 x 1-3/8" Square Key w/Round Ends
13.	G65	Plug 3/8"
14.	5B10	1/4 x 1" Woodruff Key
15.	S140	Worm Gear Front Shaft
16.	L3G24	Gear Box Bearing #15113
17.	G115	Seal
18.	G84	Cap Screw
19.	X75	Cover Bushing
20.	G116	Worm Gearbox Cover
21.	G77	Worm Gear
22.	G91	Vent Plug
23.	G117	Cap
24.	G120	Seal 1-7/8"
*	G118	Worm Gearbox Complete

NOTE: * (Indicates Not Shown Assembled)

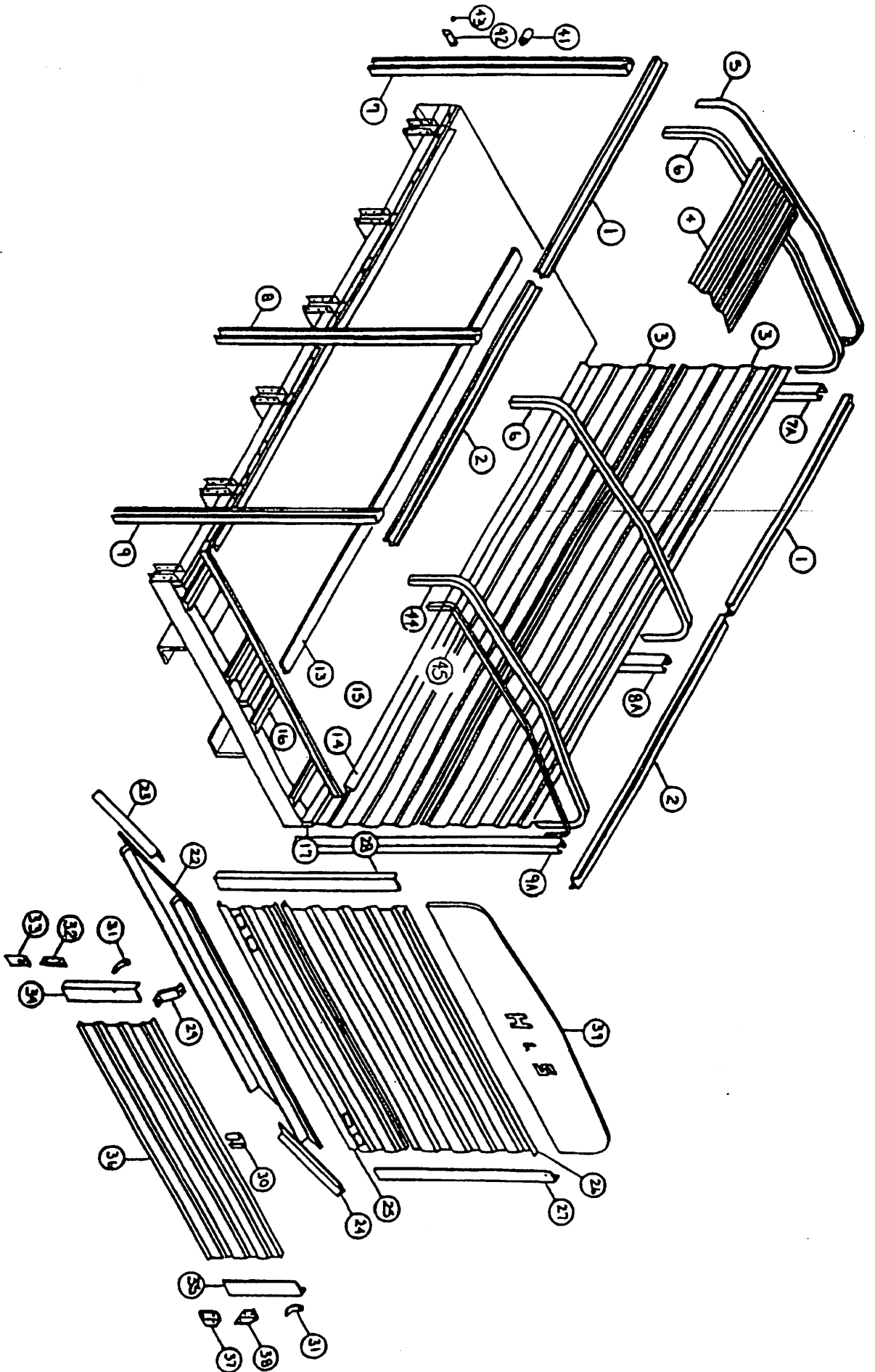
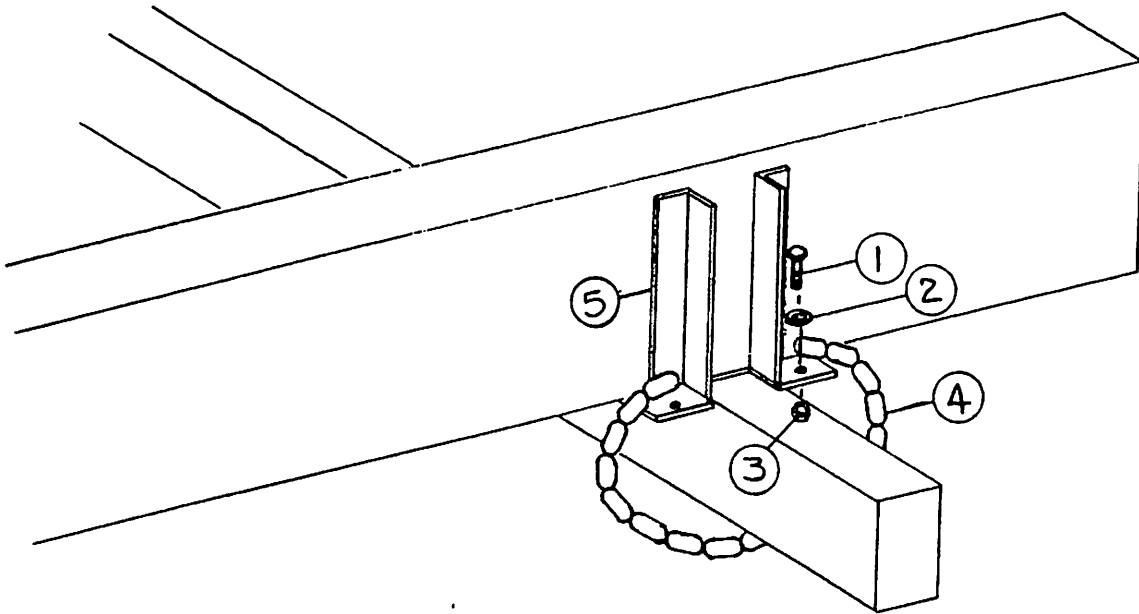


FIGURE 8

**FIGURE 8
BOX COMPONENTS**

ITEM	PART NO.	DESCRIPTION	ITEM	PART NO.	DESCRIPTION
1.	S142	14' Roof Sill Front Section	16.	S408	14' Apron Chain Return Slide
	S143	16' Roof Sill Front Section		S271	16' Apron Chain Return Slide
	S144	18' Roof Sill Front Section		S272	18' Apron Chain Return Slide
	S423	20' Roof Sill Front Section		S430	20' Apron Chain Return Slide
2.	S145	14' Roof Sill Back Section	17.	S174	14' Floor Support 2x4
	S146	16' Roof Sill Back Section		S175	16' Floor Support 2x4
	S147	18' Roof Sill Back Section		S176	18' Floor Support 2x4
	S424	20' Roof Sill Back Section		S431	20' Floor Support 2x4
3.	S148	14' Side Steel	22.	S184	Rear Slant Panel
	S149	16' Side Steel	23.	S185	LH Angle for Slant Panel
	S150	18' Side Steel	24.	S186	RH Angle for Slant Panel
	S425	20' Side Steel	25.	S307	Back Door Center Steel
4.	S151	14' Roof Steel (5)	26.	S188	Back Door Upper Steel
	S152	16' Roof Steel (5)	27.	S189	Back Door RH Side Piece
	S153	18' Roof Steel (5)	28.	S190	Back Door LH Side Piece
	S426	20' Roof Steel	29.	S191	Slant Panel Brace
5.	S154	Branch Guard	30.	F97	SMV Holder
5A.	ST61	Branch Guard (High Sided)	31.	S192	Handle Nut
6.	S155	Roof Support	32.	S193	LH Hinge Top Piece
6A.	ST60	Roof Support (High Sided)	33.	S194	LH Hinge Bottom Piece
7.	ST48	LH Front Stake	34.	S195	Tailgate LH Side Piece
7A.	ST48	RH Front Stake	35.	S196	Tailgate RH Side Piece
8.	ST49	LH Side Stake	36.	S197	Tailgate Steel
8A.	ST49	RH Side Stake	37.	S198	RH Hinge Bottom Piece
9.	ST50	LH Back Stake	38.	S199	RH Hinge Top Piece
9A.	ST51	RH Back Stake	39.	S453	Back Door Top Panel
13.	S162	14' Apron Chain Center Spacer	39A.	S454	Back Door Top Panel (High Sided)
	S163	16' Apron Chain Center Spacer	41.	ST55	Stake Spacer
	S164	18' Apron Chain Center Spacer	42.	ST56	Cable Bracket
	S427	20' Apron Chain Center Spacer	43.	ST57	Plastic Grommet for Cable
14.	S165	14' Apron Chain Side Spacer	44.	S235	Rear Roof Support
	S166	16' Apron Chain Side Spacer	44A.	S236	Rear Roof Support (High Sided)
	S167	18' Apron Chain Side Spacer	45.	S154	Rear Branch Guard (14'+16')
	S428	20' Apron Chain Side Spacer	45A.	ST61	Rear Branch Guard (18'+20')
15.	S168	14' Floor Assembly			
	S169	16' Floor Assembly			
	S170	18' Floor Assembly			
	S429	20' Floor Assembly			

FIGURE 9



TIE DOWN KIT

ITEM	PART NO.	DESCRIPTION
1.	12V45	1/2" x 1-1/2" GR.5 Bolt
2.	K68	1/2" Flat Washer
3.	R11	1/2" Top Lock Nut GR.5
4.	S322	1/4" Chain 30-1/4" Long
5.	S323	Tie Down Bracket
*	T9B	Tie Down Kit (Complete)

NOTE: * (Means Not Shown)

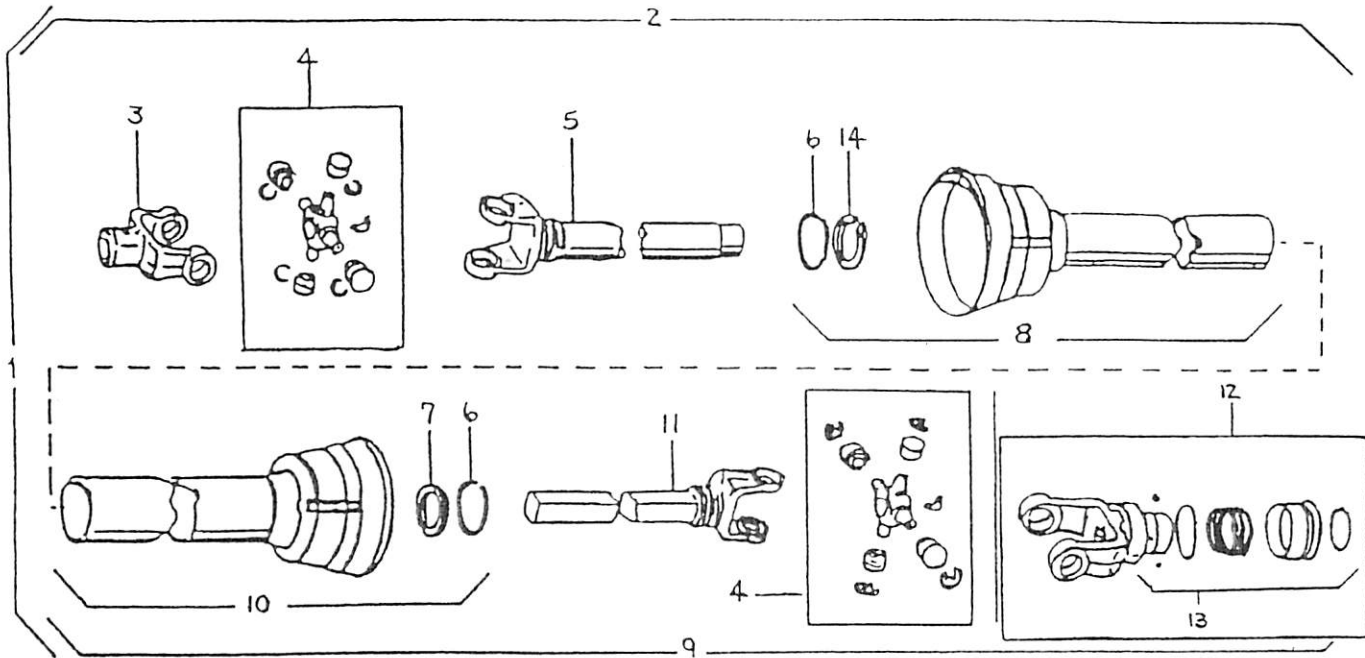


FIGURE 10
PTO PARTS
HD NEEDLE BEARING PTO

ITEM	PART NO.	DESCRIPTION
1.	S372	PTO Assembly Complete
2.	S373	Machine Half PTO W/Shield
3.	S374	End Yoke - Machine Half
4.	S375	"W" Repair Kit
5.	S376	Yoke and Tube
6.	24N26	Bearing Retainer
7.	S206	Nylon Bearing
8.	S397	Inner Guard Includes Cent. & Item #6 & #14
9.	S377	Tractor Half PTO
10.	S398	Outer Guard Includes Item #6 & #7
11.	S378	Yoke and Shaft
12.	S379	Lock Yoke - Yoke Assembly
13.	S225	Spring Lock Repair Kit
14.	S396	Nylon Bearing
15.	S402	Safety Manual

FIGURE 11

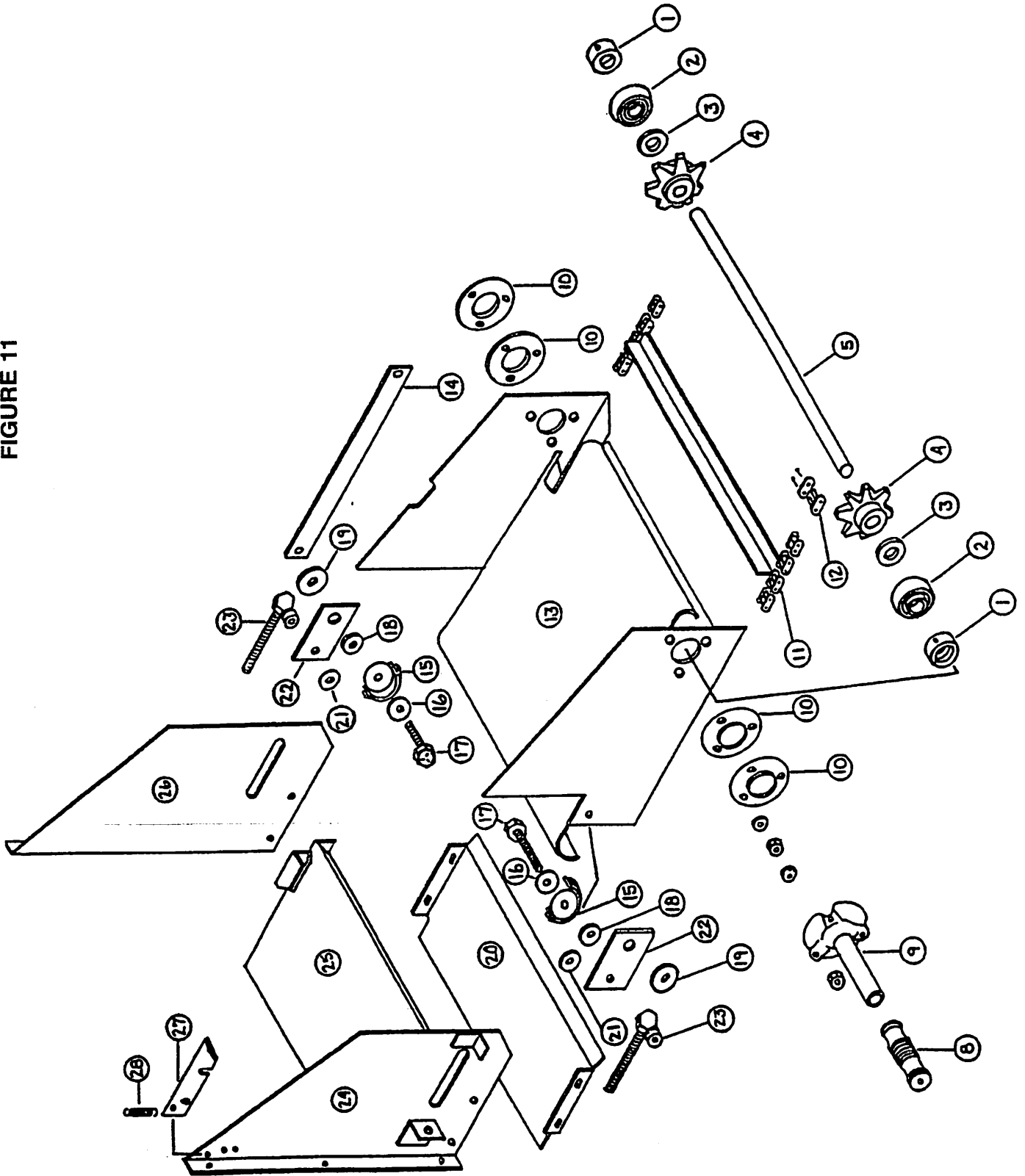


FIGURE 11
H&S MODELS H D 7+4 OPTIONAL 12" EXTENSION

ITEM	PART NO.	DESCRIPTION
1.	4C9	Lock Collar
2.	4C8	1" Bearing
3.	BFR33	Spacer
4.	S417	8T Sprocket
5.	S238	Extension Idler Shaft
8.	X41	Handle Grip
9.	S241	Handle
10.	4C7	Bearing Flange
11.	S242	Cross Conveyor
12.	K121	Connector Link
13.	S243	Main Shell
14.	S244	Extension Brace
15.	S245	Chain Slide Assembly
16.	A34	Washer
17.	F52	Bolt Grade 5-1/2 x 2"
18.	S246	Extension Shell Hinge
19.	S247	Extension Washer
20.	S248	Pan Extension
21.	S249	Extension Shell Spacer
22.	S250	Extension Side Plates
23.	S251	Extension Tightener Bolt
24.	S252	Extension Front Panel
25.	S253	Extension Slider Pan Assembly
26.	S254	Extension Back Panel
27.	S255	Extension Latch
28.	12R3	Spring